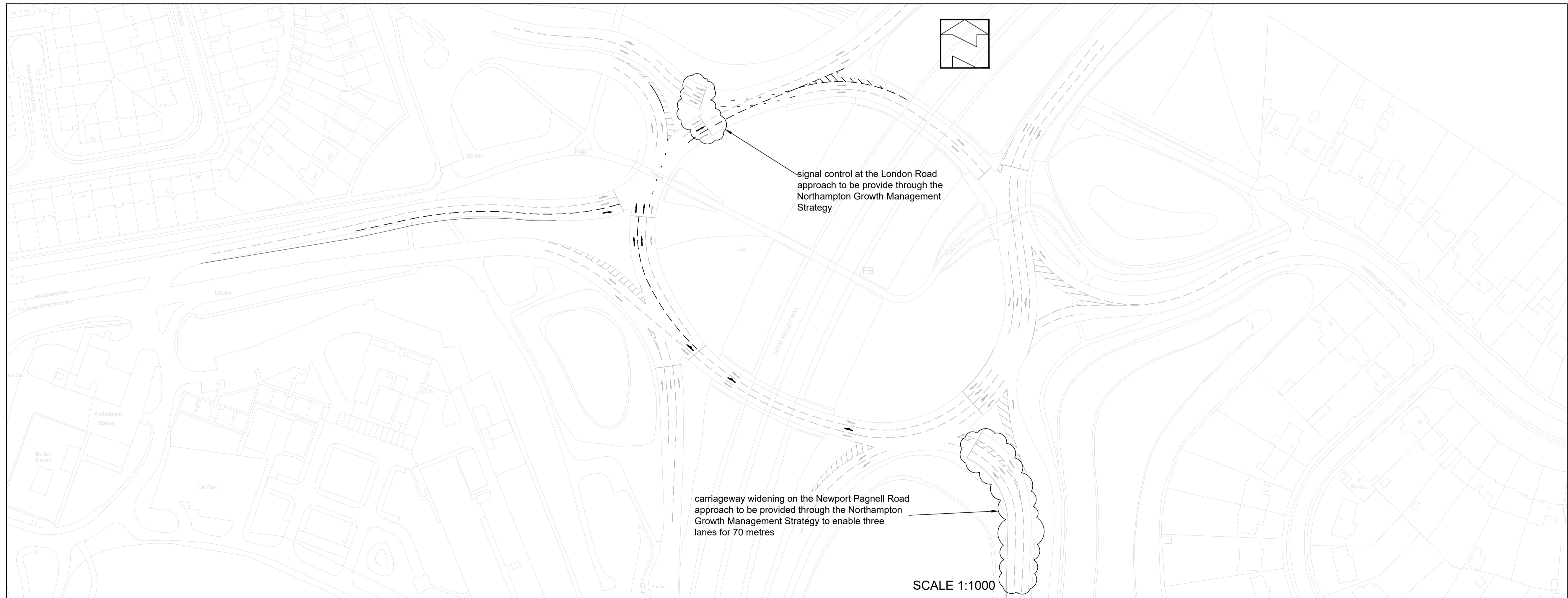
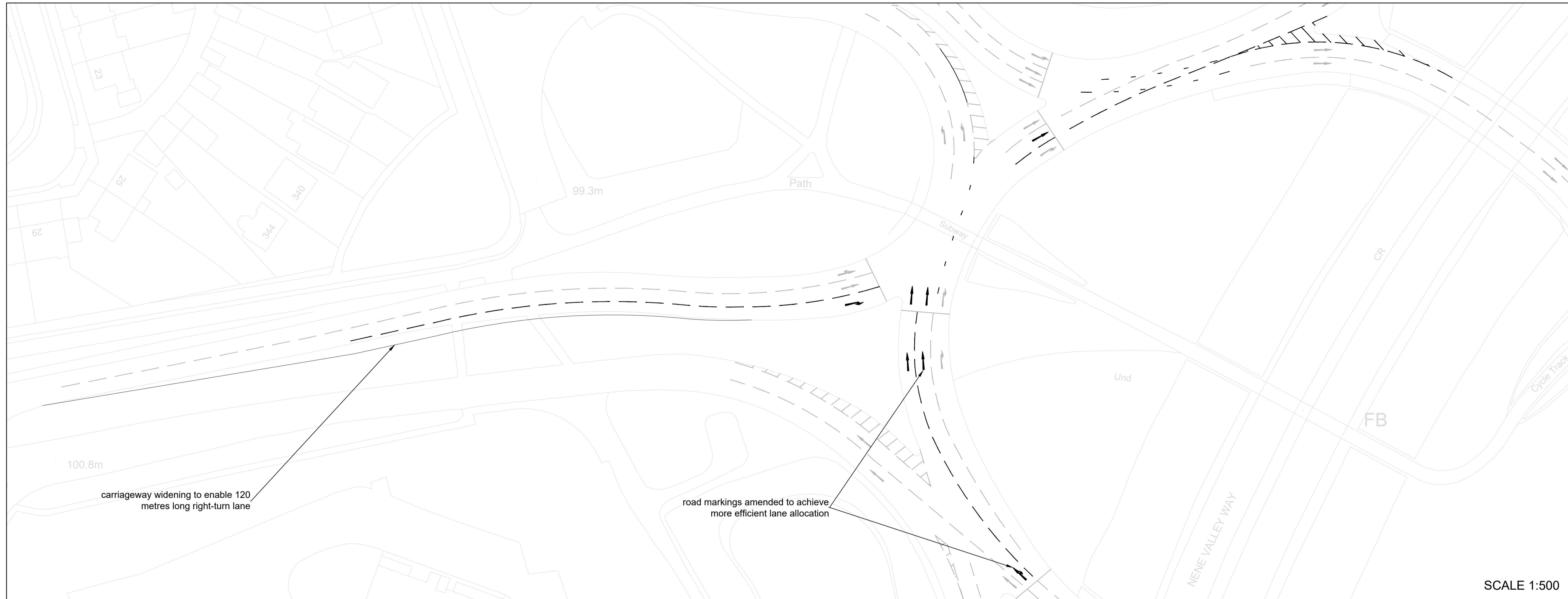


Appendix 57
Potential highway improvement schemes at
A45 Queen Eleanor interchange and
the A5076 between the A45 and the A5123



D	Viewport changed	11/12/17
C	Amended following revised modeling	30/08/17
B	Amended roadmarkings	16/08/17
Rev	Description	Date

Client:



Project:
Northampton Gateway Strategic Rail Freight Interchange

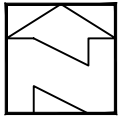
Title:
Potential Queen Eleanor Gyratory Improvement Scheme



Drg Size:	Scale:	Date:
A1	AS SHOWN	15/08/2017

Drg No:	Rev:
ADC1475/SK03	D

SCALE 1:500



carriageway widening to enable 150 metres long right-turn lane

A5076 Mere Way

SCALE 1:1000

A5076 Danes Camp Road

A5123 Towcester Road N

Towcester Road S

Supermarket Access

A5076 Mere Way

Rev	Description	Date



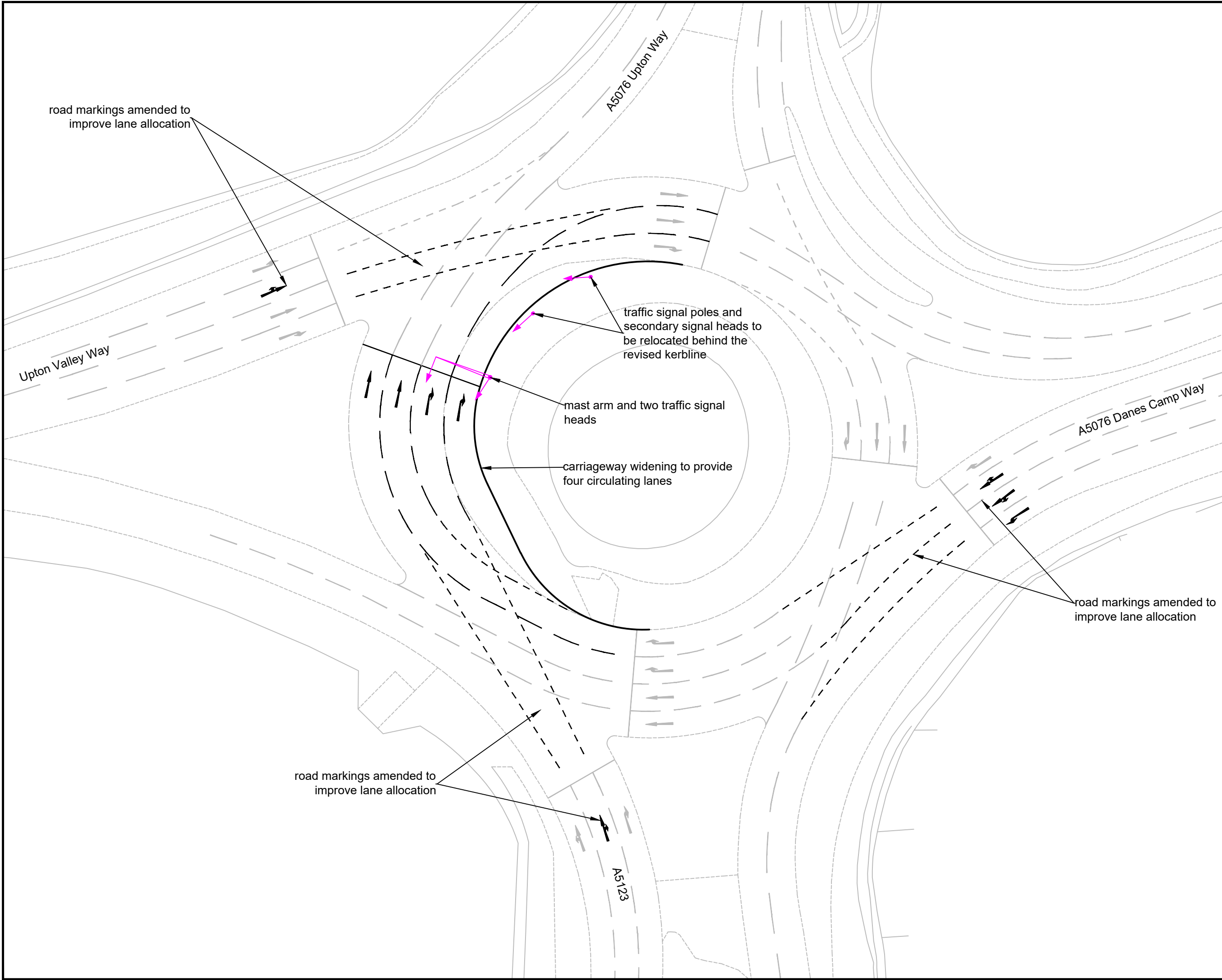
Project: Northampton Gateway Strategic Rail Freight Interchange

Title: Potential Danes Camp Way/Mere Way/Towcester Road Junction Improvement Scheme



Dwg Size: A3 Scale: AS SHOWN Date: 24/11/2017

Dwg No: ADC1475/SK04 Rev: A



Rev	Description	Date



Project:
Northampton Gateway Strategic Rail Freight Interchange

Title:
Potential A5123/A5076 Danes Camp Way/Upton Valley Way Junction Improvement Scheme



Dwg Size: A3
Scale: 1:500
Date: 22/03/2018

Dwg No: ADC1475/SK05
Rev: A